



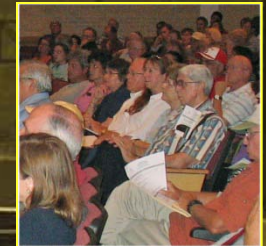
ALAMO RMA
Alamo Regional Mobility Authority

Operating and Capital Projects Budget

Revised Operating Budget: FY 2011

Proposed Operating and Capital Projects Budget: FY 2012

Future Capital Improvements Planned FY 2013-FY 2022



Alamo RMA Current Projects

■ Development Projects

- US 281 Environmental Impact Statement
- Loop 1604 Environmental Impact Statement
- Loop 1604 Project
- US 281 Project

■ Construction-in-Progress Projects

- US 281 Super Street
- US 281 / Loop 1604 Interchange
- Loop 1604 Super Street



ALAMO RMA
Alamo Regional Mobility Authority

Alamo RMA Current Projects

■ Planned Construction

- Segment 1: US Hwy 90 to W. Military
- Segment 2: W. Military to Braun Rd.
- Segment 3: Braun Rd. to NW Military
- Segment 4: NW Military to Red Land Rd
- Segment 5: Red Land Rd to IH-35

■ Planned Construction

- Segment 6: US Hwy 281 from Loop 1604 North to Bexar Co. Line



ALAMO RMA
Alamo Regional Mobility Authority

**Loop 1604 – US 90 to NW Military
21 Miles**

Record of Decision – December 2012
Design/Build Procurement begins – April 2012
Project Commences March 2013
Project Completion – March 2016

**Loop 1604 – NW Military
to Redland Road 7 Miles**

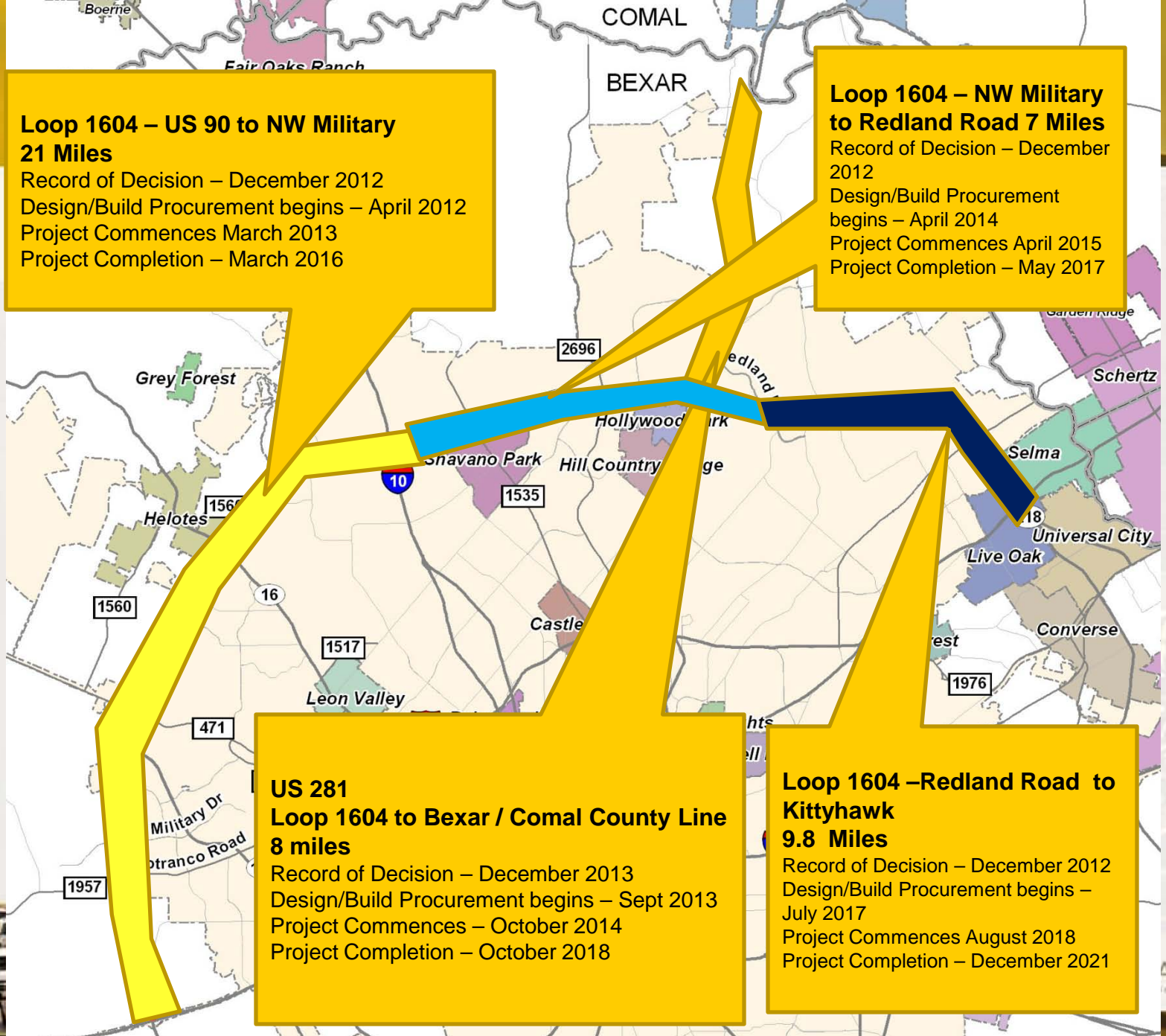
Record of Decision – December
2012
Design/Build Procurement
begins – April 2014
Project Commences April 2015
Project Completion – May 2017

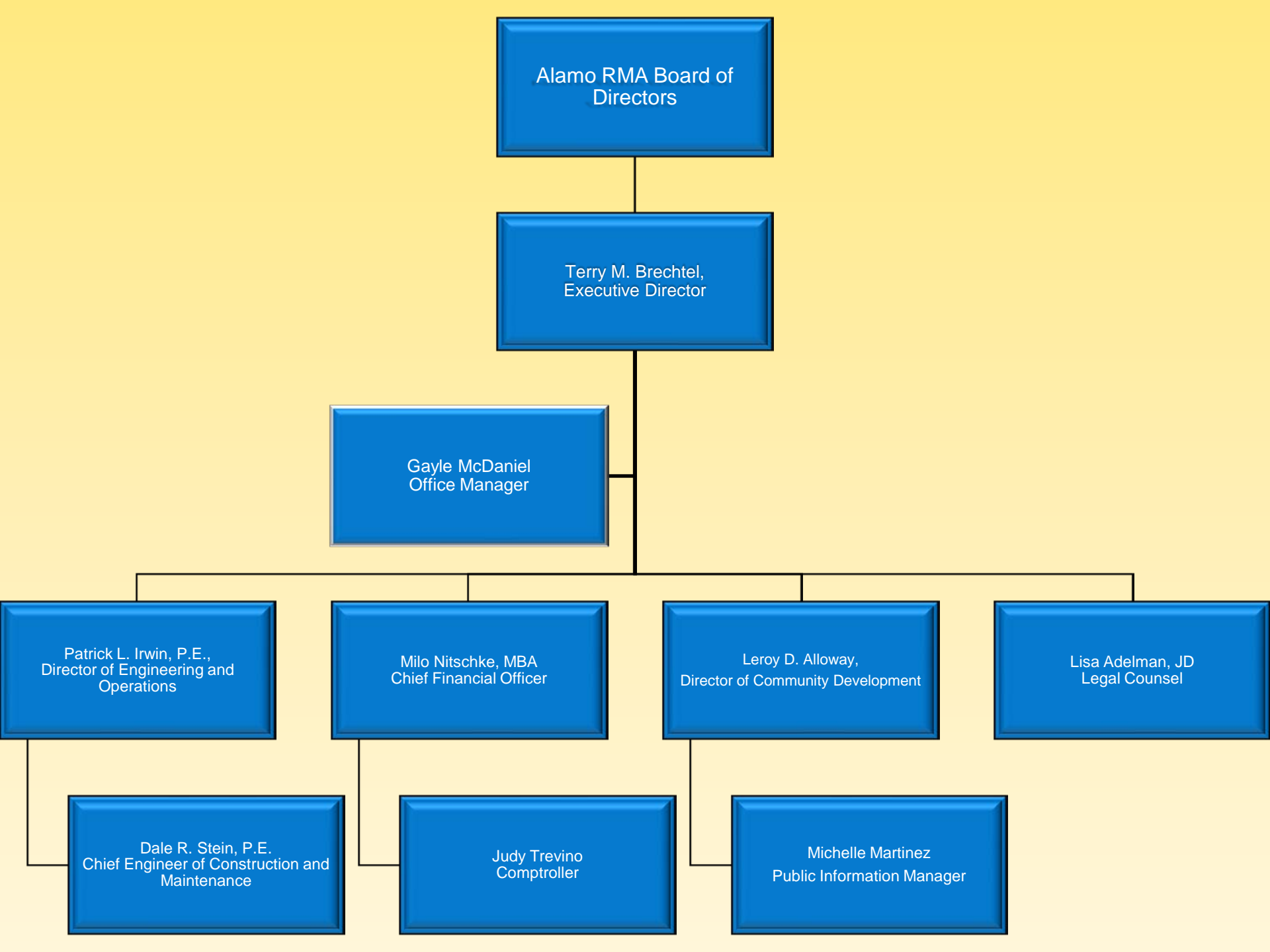
**US 281
Loop 1604 to Bexar / Comal County Line
8 miles**

Record of Decision – December 2013
Design/Build Procurement begins – Sept 2013
Project Commences – October 2014
Project Completion – October 2018

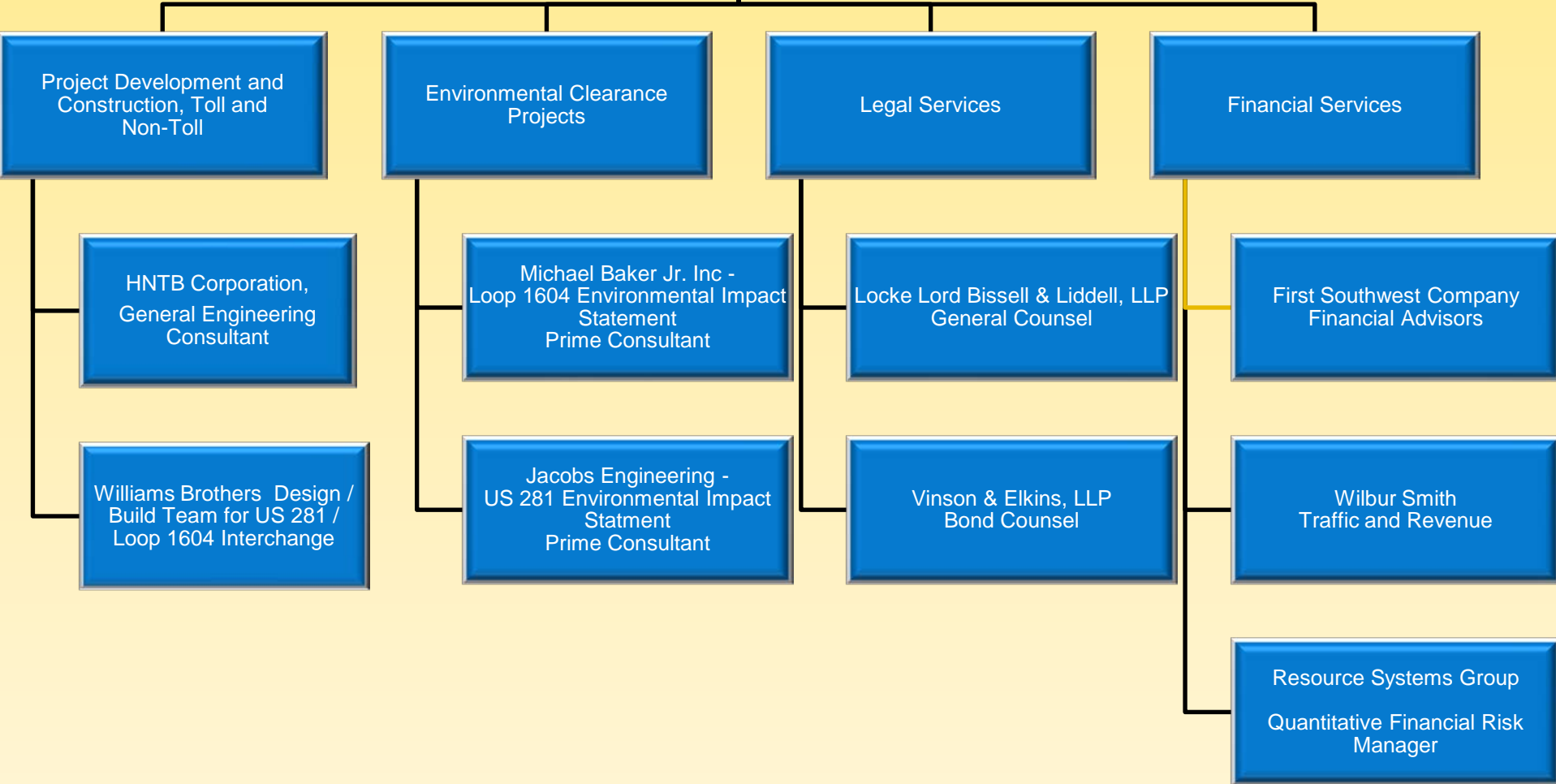
**Loop 1604 – Redland Road to
Kittyhawk
9.8 Miles**

Record of Decision – December 2012
Design/Build Procurement begins –
July 2017
Project Commences August 2018
Project Completion – December 2021





Alamo Regional Mobility Authority



Project Update – Loop 1604 Super Street Environmental Clearance

<u>Event</u>	<u>Start Date</u>	<u>Completion</u>
■ Environmental Clearance		
Segment 1 – Braun Rd	Feb 2010	Jul 2010
Segment 2 – Guilbeau/Shauenfield	Feb 2010	Oct 2010
Segment 3a – SH151 @ Loop 1604	Feb 2010	Oct 2010
Segment 3b – SH151 @ Loop 1604 (Underpass)	Jun 2010	Nov 2011



Project Update – Loop 1604 Super Street Construction

<u>Event</u>	<u>Start Date</u>	<u>Est. Completion</u>
■ Construction		
Segment 1 – Braun Rd	May 2010	Dec 2010
Segment 2 – Guilbeau/Shauenfield Construction	Mar 2011	Sep 2011
Segment 3a – SH151 @ Loop 1604 Construction	Mar 2011	Dec 2011



Project Update – Loop 1604 Super Street Construction – 151 at 1604 Underpass

<u>Event</u>	<u>Est. Start Date</u>	<u>Est. Completion</u>
■ Construction Segment 3b – SH151 @ Loop 1604 (Underpass) Construction	Jan 2012	Dec 2013



ALAMO RMA
Alamo Regional Mobility Authority

FY 2011 Revised Operating Budget

- **FY 2011 Adopted Operating Budget** **\$1,582,170**
- **FY 2011 Revised Operating Budget** **\$1,527,248**
- **FY 2011 Budget reduction is** **\$ 54,922**



ALAMO RMA
Alamo Regional Mobility Authority

FY 2012 Proposed Operating and Capital Budget

<u>Project</u>	<u>Total</u>
US 281 EIS	\$ 1,168,812
Loop 1604 EIS	\$ 3,180,705
US 281 Project	\$ 428,853
Loop 1604 Project	\$ 1,974,331
US 281 at Loop 1604 Interchange – South	\$ 41,790,227
US 281 Super Street	Done
Loop 1604 Super Street	Done
Total	\$ 48,542,928



ALAMO RMA
Alamo Regional Mobility Authority

FY 2012 Proposed Operating Budget

Total Compensation, Including Benefits & Payroll Taxes	\$1,241,667
Office Space	\$109,436
Operating Expense	229,920
Professional Services	<u>59,450</u>
* Total Operating Budget	\$1,640,473

* Excluding depreciation



ALAMO RMA
Alamo Regional Mobility Authority

FY 2012 Proposed Operating Budget

Total Compensation, Including Benefits & Payroll Taxes (Con't)

Staff – 9.00 FTE, No New Hires

Executive Director

Director of Engineering & Operations

Legal Counsel

Director Community Development

Chief Financial Officer

Chief Engineer Construction & Maintenance

Comptroller

Public Information Manager

Office Manager – Reclassify part time Administrative Assistant to full time Office Manager



ALAMO RMA
Alamo Regional Mobility Authority

FY 2012 Proposed Operating Budget

Total Compensation, Including Benefits & Payroll Taxes (Con't)

Compensation Package

Base salary and cell phone allowance

No merit pay & no Cost of living increase

Health, Life, Dental & Disability Insurance

Deferred Compensation Plan – no cost to Alamo RMA

TCDRS Retirement – Alamo RMA contribution 10.89% of taxable wages



ALAMO RMA
Alamo Regional Mobility Authority

FY 2012 Proposed Operating Budget

Operating Budget Highlights

Total compensation including benefits reflects increase of \$28,310 primarily due to reclassifying the administrative assistant position from part-time to full time Office Manager

Travel and conference expense increased by \$9,730 primarily due to the Executive Director's recent election to the Board of Directors of the International Bridge Tunnel and Turnpike Association.



ALAMO RMA
Alamo Regional Mobility Authority

FY 2012 Proposed Operating Budget

Other Operating Budget Highlights

Accounting software maintenance license and Ziegner Technologies consultation services maintained

Reduced utilization of outside legal counsel for Alamo RMA operational and general legal issues

Office space for planning purposes has been adjusted to reflect the increased Cypress Tower rent; however, it is expected that the office will move to a new location with a lower rent



ALAMO RMA
Alamo Regional Mobility Authority

FY 2012 Proposed Operating Budget

Other Operating Budget Highlights

Office relocation has been included at an estimated cost of \$24,750

Professional service costs have been decreased by \$10,550

Depreciation for the accounting system is shown as a non-cash item in the amount of \$15,779



ALAMO RMA
Alamo Regional Mobility Authority

2012 Proposed Holidays

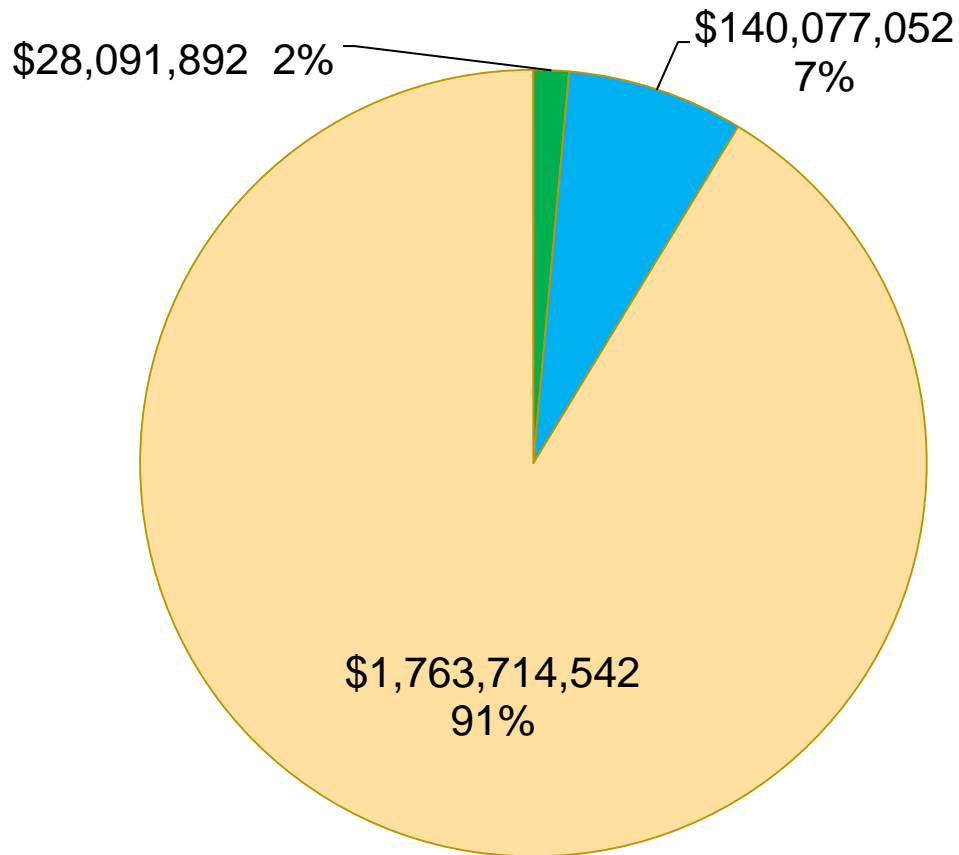
<u>Holiday</u>	<u>Observed Date</u>
New Years Day	Monday, January 2, 2012
Martin Luther King's Birthday	Monday, January 16, 2012
Presidents Day	Monday, February 20, 2012
Battle of Flowers Parade Day	Friday, April 27, 2012
Memorial Day	Friday, May 28, 2012
Independence Day	Monday, July 4, 2012
Labor Day	Monday, September 3, 2012
Veterans Day	Monday, November 12, 2012
Thanksgiving Day	Thursday, November 22, 2012
Friday after Thanksgiving Day	Friday, November 23, 2012
Christmas Eve (Holiday Observed)	Monday, December 24, 2012
Christmas Day (Holiday Observed)	Tuesday, December 25, 2012
Floating Holiday – NEW	



ALAMO RMA
Alamo Regional Mobility Authority

FY 2009-2022

Summary Capital Budget FY 2009 to FY 2022



**Total Projects Value -
\$1,931,875,864**

- Development Projects
- Construction Work-in-progress
- Future Construction Projects

Development Projects

Fiscal Year	<u>US 281 EIS</u>	<u>Loop 1604 EIS</u>
2009 & 2010	\$5,484,861	\$ 6,195,058
2011	1,252,215	1,716,579
2012	1,168,812	3,180,705
2013	675,020	609,333
2014	<u>24,805</u>	<u>-0-</u>
Total	\$8,605,713	\$11,701,675



ALAMO RMA
Alamo Regional Mobility Authority

Development Projects (Con't)

Fiscal Year	<u>US 281 Project</u>	<u>Loop 1604 Project</u>
2009 & 2010	\$1,343,873	\$ 331,597
2011	183,141	491,907
2012	428,853	1,974,331
2013	1,553,486	1,407,194
2014	<u>62,500</u>	<u>-0-</u>
Total	\$3,571,853	\$4,205,029

Total of Development Projects: \$28,091,892



ALAMO RMA
Alamo Regional Mobility Authority

Construction-in-Progress Projects

Fiscal Year	<u>Loop 1604/281 Interchange</u>	<u>US 281 Super Street</u>	<u>Loop 1604 Super Street</u>
2009 & 2010	\$8,634,048	\$ 5,110,564	\$ 854,835
2011	58,292,240	1,658,208	195,165
2012	41,790,227	-0-	-0-
2013	12,567,411	-0-	-0-
2014	10,974,352	-0-	-0-
2015	<u>-0-</u>	<u>-0-</u>	<u>-0-</u>
Total	\$132,258,278	\$6,768,772	\$1,050,000

Total of Construction-in-Progress Projects: \$140,077,052

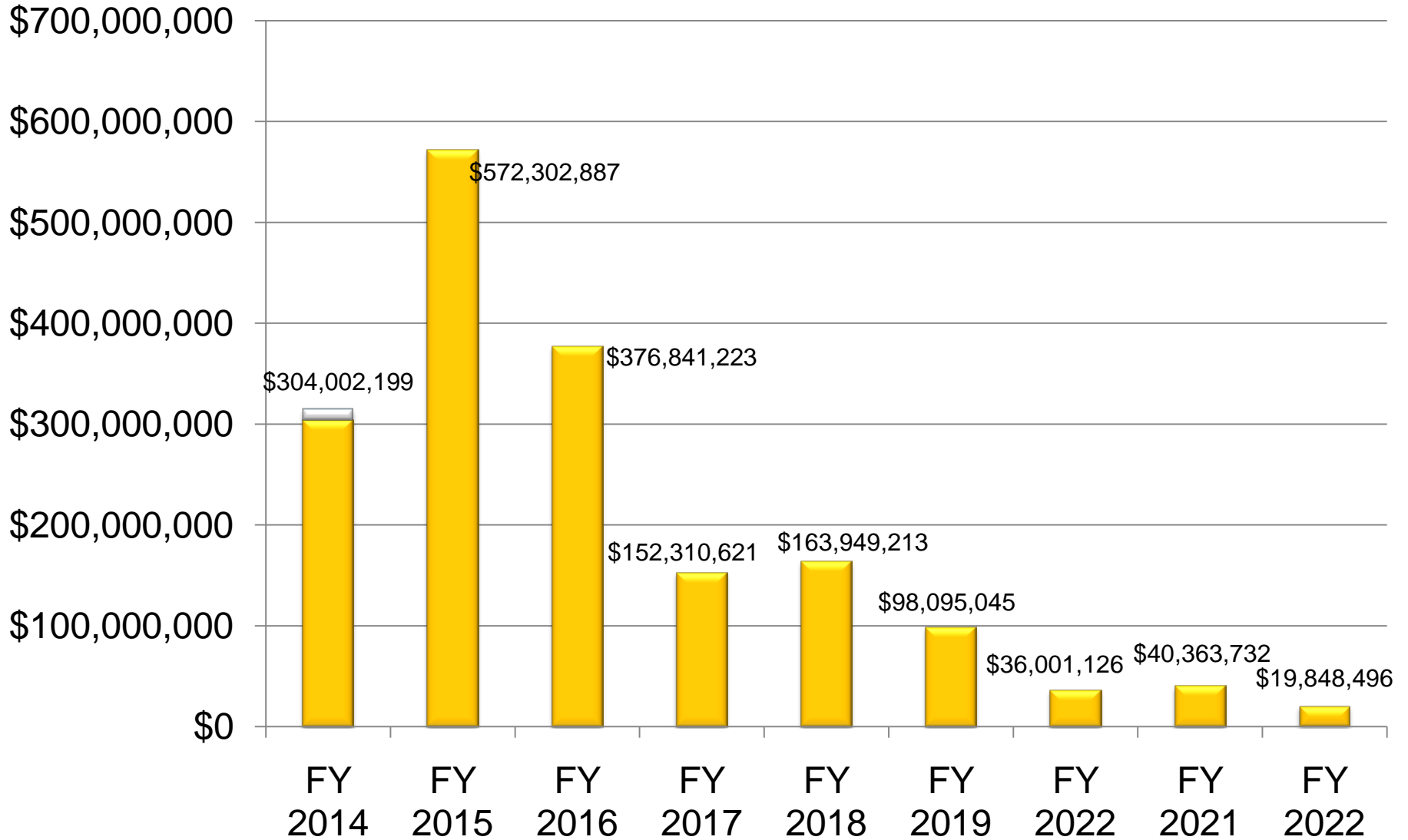


ALAMO RMA
Alamo Regional Mobility Authority

Future Construction Projects FY 2014-FY 2022

Total Value \$1,763,714,542

- Project Development
- Construction Projects - Work-in-Progress
- Planned Construction Projects



Next Steps

Develop long-term Comprehensive plan of finance

- **US 281 Project from Loop 1604 north to the Bexar/Comal County Line (7.9 miles)**
- **Loop 1604 from US 90 to IH35 (5 Segments, 35 miles)**
 - **Segment 1: US90 to West Military**
 - **Segment 2: West Military to Braun Rd.**
 - **Segment 3: Braun Rd. to NW Military**
 - **Segment 4: NW Military to Redland**
 - **Segment 5: Redland to IH35**



ALAMO RMA
Alamo Regional Mobility Authority

Next Steps

Develop Long Term Plan for IH 35

- **IH35 from downtown (IH35/IH37) to Bexar County Line**
 - **Undertake environmental study – starting with the IH 35 PEL Study**
 - **Define segments**
 - **Develop timeline**
 - **Develop long-term Comprehensive plan of Finance**



ALAMO RMA
Alamo Regional Mobility Authority

FY 2012 Proposed Operating and Capital Projects Budgets

- **Staff recommends approval of the proposed revised Fiscal Year 2011 Operating Budget and the proposed Fiscal Year 2012 Operating and Capital projects budgets**



ALAMO RMA
Alamo Regional Mobility Authority



ALAMO RMA
Alamo Regional Mobility Authority

