

San Antonio State Hospital (SASH)

Comprehensive Land Use & Program Planning Study

SASH Reuse Study – Bexar County Commissioners Court – 03/21/23

Project Info / Background

- Project site: 6711 South New Braunfels Avenue (Precinct 4)
- New 300 bed state hospital facility to be built next to current SASH facility, slated for completion in 2023
- Current SASH facility will be vacated and State is providing an opportunity to partner and repurpose buildings and surrounding properties
- University Health Consultation Assessment: Detention and Civil Behavioral Health – Phase 1
 - Bexar County in collaboration with University Health
 - Created by Meadows Mental Health Institute and HOK Architects
 - Adult Detention Center behavioral health programs and space
 - Assessment and cost to build and operate a Bexar County psychiatric hospital

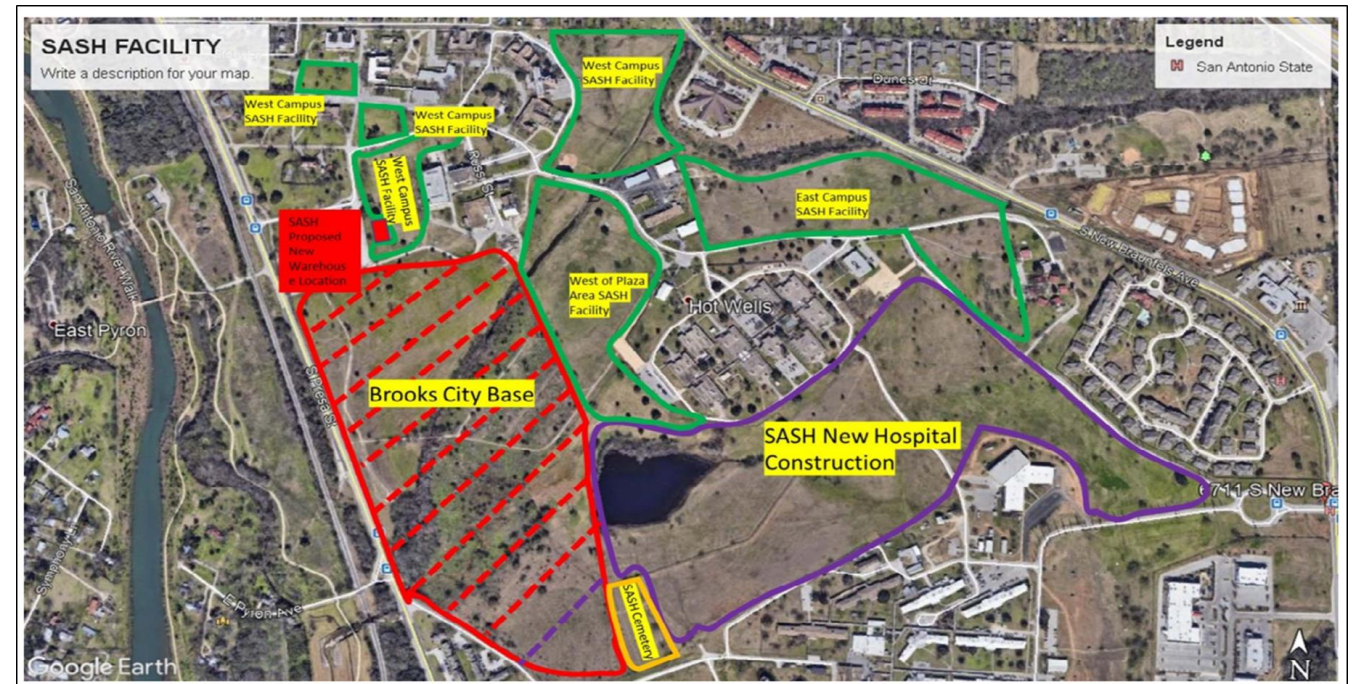


Professional Services Agreement

Prime Consultant: HKS Inc.

Project Team

- Associate Architect: Chesney Morales Partners (SBE, MBE, HABE, DBE, HUB)
- MEP Engineering: Moose Engineers (SBE, VBE, HUB)
- Behavioral Health Planning: Human Experience
- Cost Estimating: US Cost



Professional Services Agreement

Scope

- Site master plan for existing SASH facility and site
- High level existing building assessment
- High level masterplan programming
- Pricing of final masterplan option

Deliverables

- High level facility assessment report
- Recommended program mix
- Departmental space program
- Site master plan
- Master plan cost estimate

Timeline

- March 2022: Bexar County internal discussions
- June 2022: Request for Statements of Qualification issued
- July 2022: Texas Health and Human Services discussions began
- August 2022: Discussions began with City of San Antonio
- September 13, 2022: Commissioners Court approved authority to negotiate Professional Services Agreement with HKS, Inc.
- March 13, 2023: House Appropriations Committee approved Budget Rider
- Ongoing: Advocating for State funding
- Next Steps: SASH Executive Committee discussions