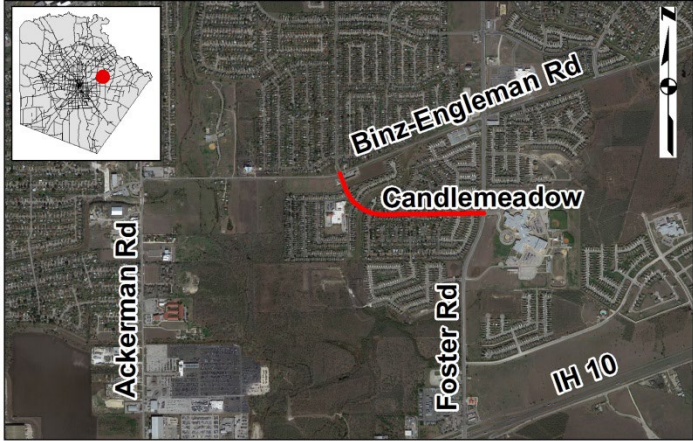




ALAMO REGIONAL MOBILITY AUTHORITY
COUNTY OF BEXAR



Project: Candlemeadow – Non-Tolled (BC09)



Limits: Binz-Engleman to Foster Road
Contractor: TBD
Engineer: LNV, Inc.
Construction Cost: \$4,871,176
Construction NTP: December 7, 2020
Scope: Reconstruct the existing roadway including two twelve-foot travel lanes, six-foot shoulders, curb and full width sidewalks for improved connectivity and safety.
Status: Completed

