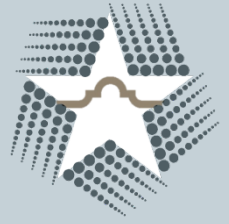
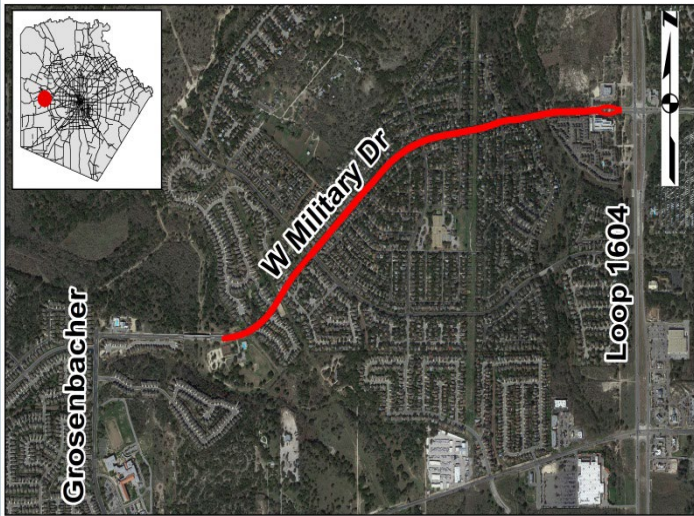




ALAMO REGIONAL MOBILITY AUTHORITY  
COUNTY OF BEXAR



**Project: West Military Drive – Non-Tolled (BC05)**



**Limits:** 0.1 mile west of Pinafore Street to Loop 1604

**Contractor:** TBD

**Engineer:** K+Friese, Associates

**Construction Cost (Includes joint-bid utility work):** estimated \$9,340,000.69

**Construction NTP:** 11/7/22

**Contract Completion Date:** 3/1/24

**Scope:** Full-depth reconstruction from 0.1 mile west of Pinafore Street to Westcreek Oaks Drive including one lane in each direction, a raised median, shoulders, curb, and full-width sidewalks. Curb-to-curb mill and overlay from Westcreek Oaks Drive to Loop 1604.

**Status:** In Construction