

# **BEXAR COUNTY**

## **BUDGET DEPARTMENT**

### **BEXAR COUNTY JUDICIAL MANAGEMENT REPORT**

**CRIMINAL DISTRICT ATTORNEY  
FY 2010-11 3<sup>rd</sup> QUARTER  
(APRIL, MAY, JUNE)**

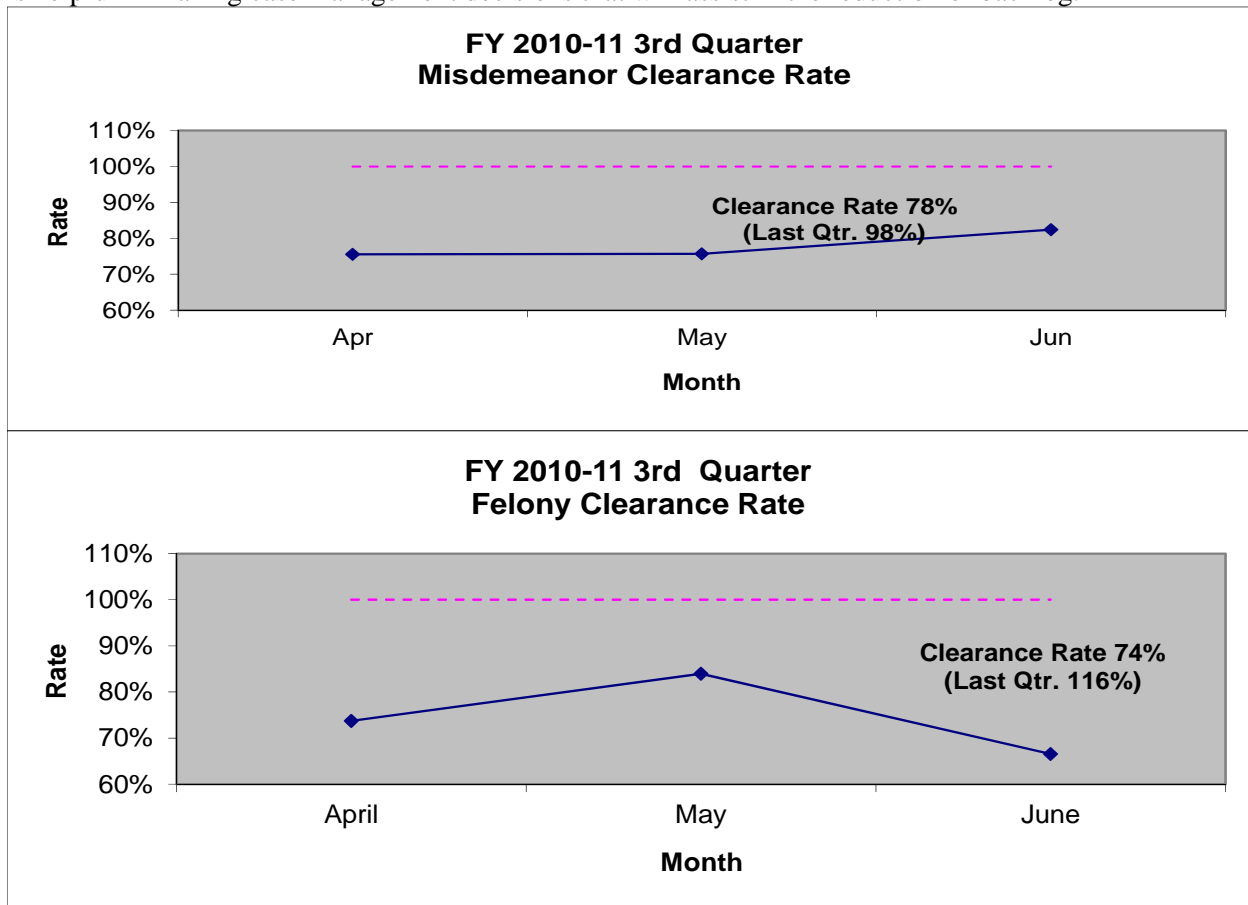
**JUDICIAL SYSTEM WORKLOAD  
AND EFFICIENCY MEASURES**

## Measure 1: Clearance Rates

**Definition:** The number of disposed cases as a percentage of the number of incoming cases.

**Method:** Clearance rates are measured using two variables, incoming cases and the number of cases disposed monthly. For felonies, incoming cases include cases filed by indictment, cases filed by information, motion to revoke probation (MTRs), transfers, and cases reactivated. For the misdemeanors, incoming cases include new cases filed, cases appealed from lower courts, other cases reaching docket (cases reactivated, motions to revoke probation or deferred adjudication/other), and other cases added. The number of outgoing cases includes all monthly dispositions. Certain dismissals have been removed this quarter to follow the Office of Court Administration guidelines, which include Cases Dismissed, Dismissed-Deferred Adjudication, Dismissed-Deceased, Dismissed Reduced to Class C, and Dismissed and Reduced. These dismissals were removed because they have previously been counted as a disposition either through a plea or other conviction. *Note: Due to changes in reporting requirements by the Office of Court Administration, cases reactivated is a new data set collected by the County Clerk's Office, which will increase the number of incoming cases. Cases reactivated report the number of cases that had previously been placed in an inactive pending status, in which the defendant is now available for court proceedings.*

**Analysis and Interpretation:** The clearance rate is a measure of the incoming cases the judicial system receives monthly compared to the total cases disposed of monthly. This measure portrays the judicial system's ability to balance current caseload and incoming cases. A clearance rate of 100% represents maintaining the status quo. Above 100% represents the system disposing of more cases than it is receiving. Below 100% represents the system disposing of fewer cases than it is receiving. This measure is helpful in making case management decisions that will assist in the reduction of backlog.

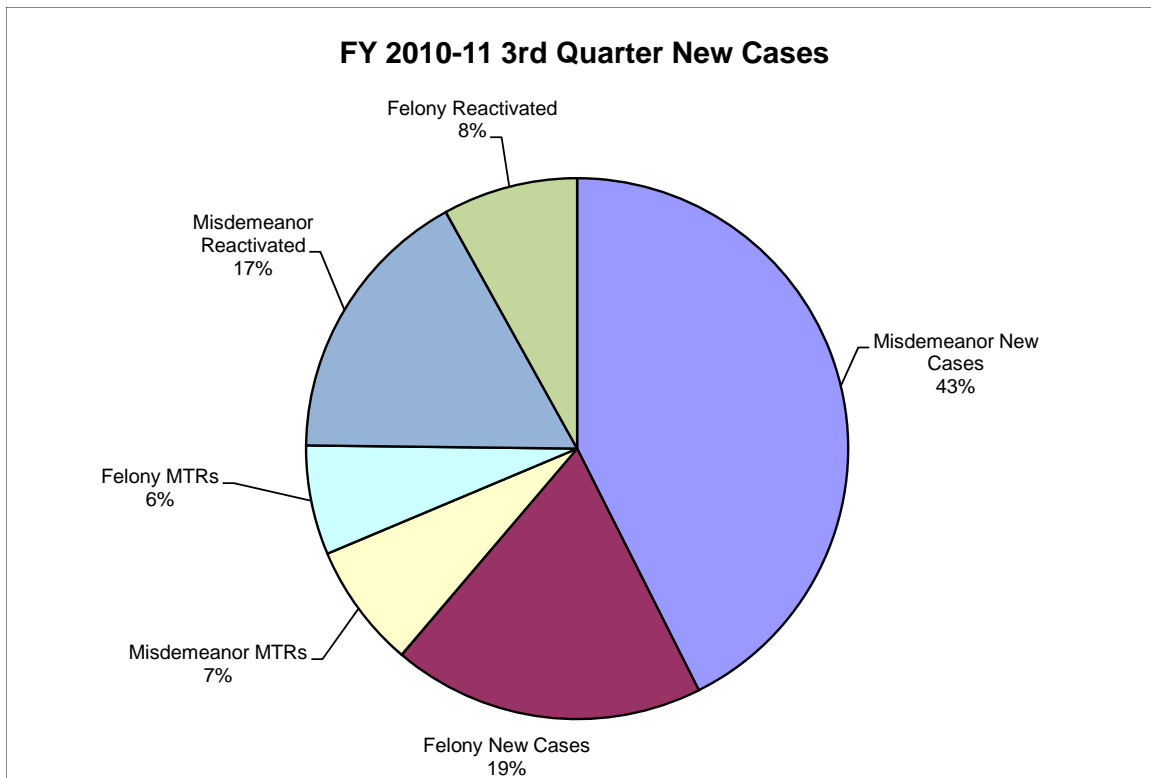


## Measure 2: New Cases

**Definition:** New cases are the incoming cases for the judicial system.

**Method:** For felonies, incoming cases include cases filed by indictment, cases filed by information, motion to revoke probation (MTRs), shock probation returned, and cases reactivated. For the misdemeanors, incoming cases include new cases filed, cases reactivated.

**Analysis and Interpretation:** The following charts breakout new cases and MTRs for misdemeanors and felonies for FY 2010-11 3<sup>rd</sup> Quarter.

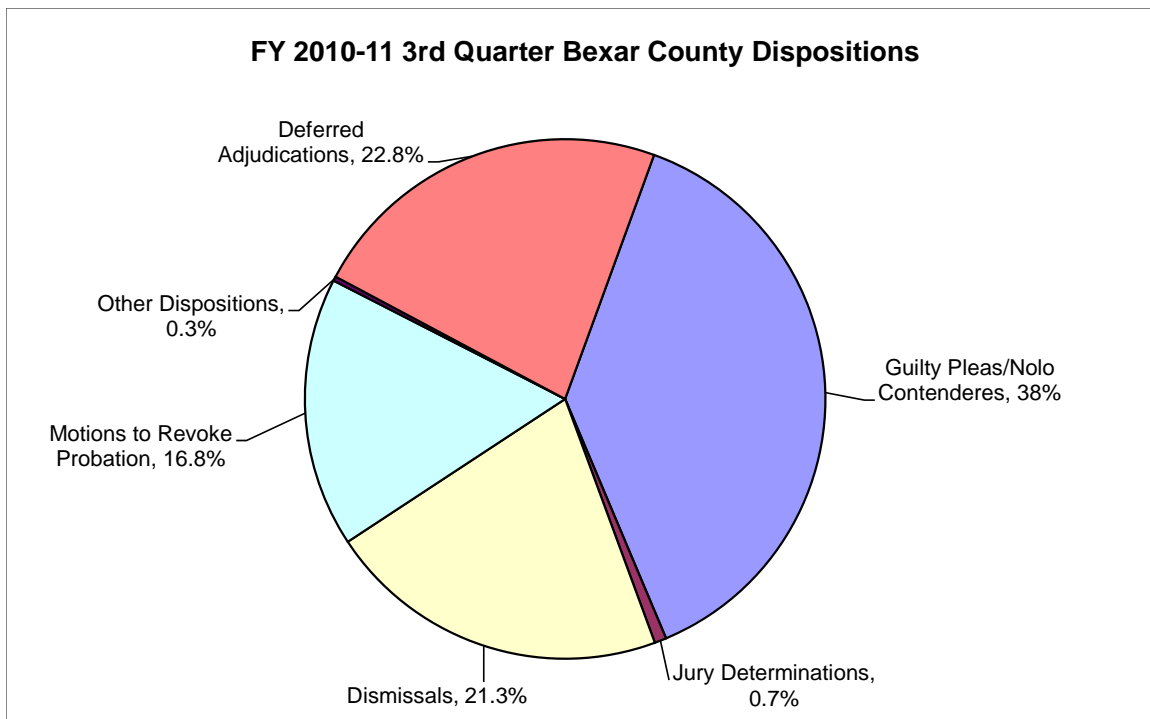


### Measure 3: Disposed Cases

**Definition:** Disposed cases are cases removed from the judicial system.

**Method:** Dispositions included for misdemeanors and felonies are convictions, cases placed on deferred adjudication, acquittals, dismissals, and other dispositions (motions to revoke granted/denied, other dispositions). Each section shows the percentage by type of disposition. Certain dismissals have been removed this quarter to follow the Office of Court Administration guidelines, which include Case Dismissed, Dismissed-Deferred Adjudication, Dismissed-Deceased, Dismissed Reduced to Class C, and Dismissed and Reduced. These dismissals were removed because they have previously been counted as a disposition either through a plea or other conviction.

**Analysis and Interpretation:** The following charts breakout disposed cases for misdemeanors and felonies for FY 2010-11 3<sup>rd</sup> Quarter.



## Measure 4: Jail Bed Days Consumed

**Method:** The measure shows the number of jail beds consumed by inmates awaiting indictment, awaiting trial, and awaiting Motions to Revoke and Motions Entered to Adjudicated Guilt disposition.

**Analysis and Interpretation:** The following chart shows the number of jail bed days consumed by inmates awaiting indictment, awaiting trial, and awaiting MTR/MEAG disposition. The graph is categorized by date ranges of ten jail bed days consumed.

