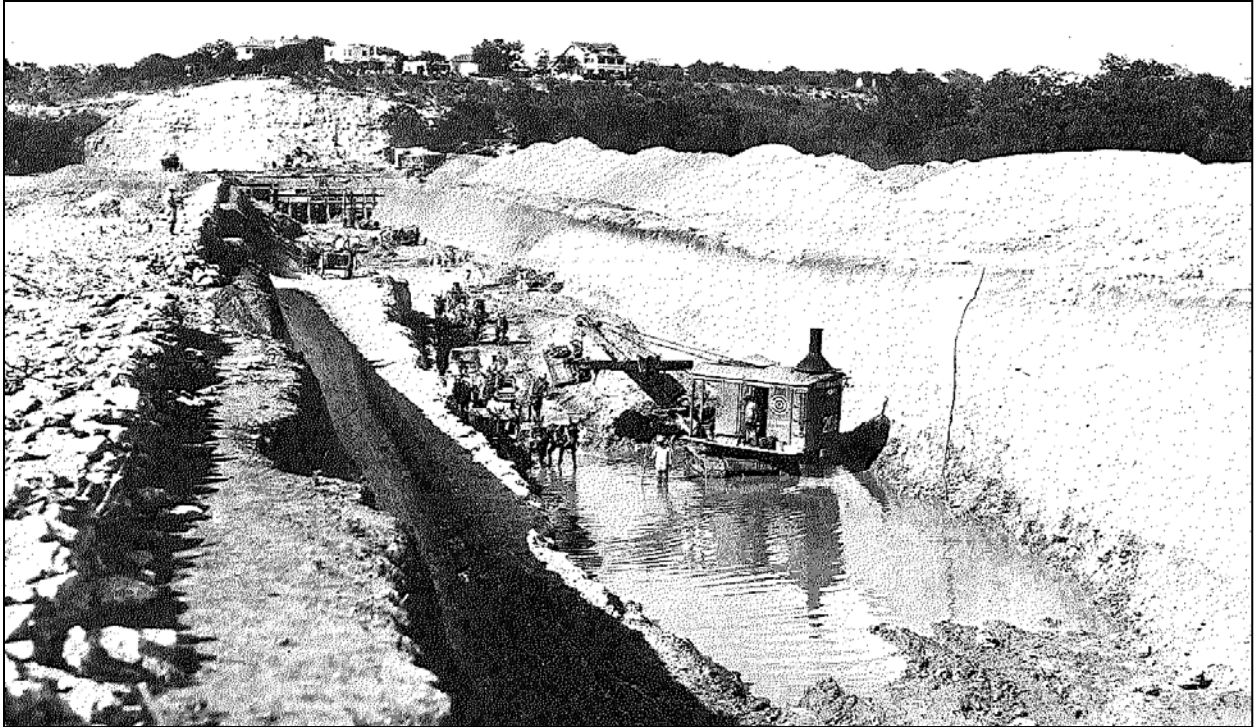


# **ROAD FUNDS**



Olmos Dam was completed in 1926 and was designed to protect the City of San Antonio downtown business district. Bexar County has allocated funding for repairs to the aging dam within the Flood Control Capital Fund. Construction was completed in June 2011.

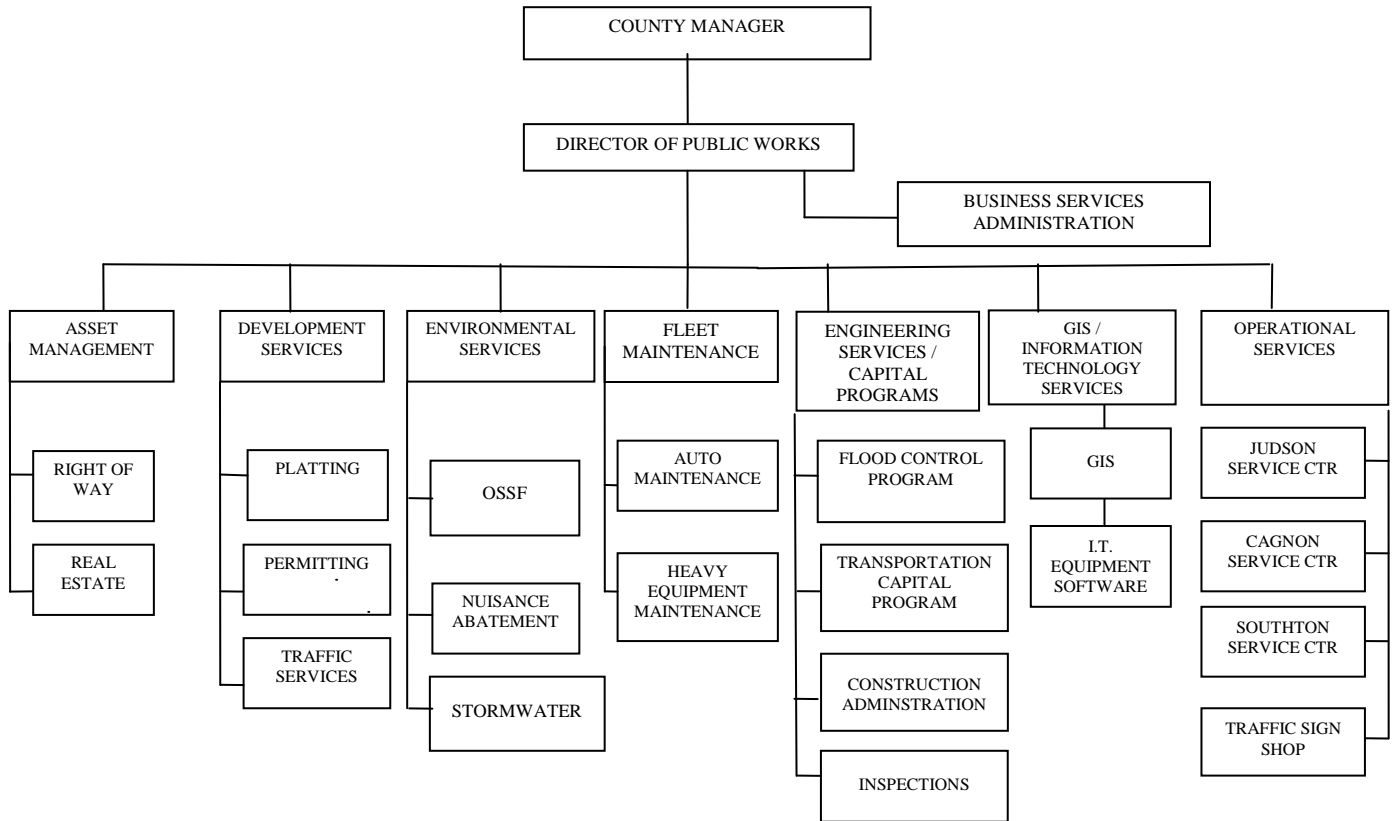


**Bexar County, Texas**  
**Public Works – County Road and Bridge Fund (Previously 096 & 280)**  
**Fiscal Year Ending September 30, 2012**

	<b>FY 2009-10</b>	<b>FY 2010-11</b>	<b>FY 2011-12</b>
	<b>Actual</b>	<b>Estimate</b>	<b>Budget</b>
<b>AVAILABLE FUNDS</b>			
<b>Beginning Balance, October 1, 2011</b>			
Undesignated Funds	\$22,957,035	\$9,918,185	\$5,922,797
<b>Total Beginning Balance</b>	<b>\$22,957,035</b>	<b>\$9,918,185</b>	<b>\$5,922,797</b>
<b>Revenue</b>			
Ad Valorem Taxes	\$1,741	\$2,396	\$1,100
Other Taxes, Licenses and Permits	114,598	84,834	84,000
Intergovernmental Revenue	95,841	90,000	90,000
Fees on Motor Vehicles	17,678,620	16,883,621	15,947,000
Other Fees	217,778	234,587	250,000
Revenue From Use of Assets	151,136	134,272	75,000
Sales, Refunds and Miscellaneous	58,750	21,761	5,820
<b>Subtotal</b>	<b>\$18,318,464</b>	<b>\$17,451,471</b>	<b>\$16,452,920</b>
Interfund Transfers	4,235,445	2,770,000	2,770,000
<b>Total Revenues</b>	<b>\$22,553,909</b>	<b>\$20,221,471</b>	<b>\$19,222,920</b>
<b>TOTAL AVAILABLE FUNDS</b>	<b>\$45,510,944</b>	<b>\$30,139,656</b>	<b>\$25,145,717</b>
<b>APPROPRIATIONS</b>			
Capital Projects	\$210,527	\$836,262	\$595,844
Highways	15,825,693	17,362,693	18,449,875
Capital Expenditures	1,241,085	2,017,904	1,770,000
<b>Subtotal</b>	<b>\$17,277,305</b>	<b>\$20,216,859</b>	<b>\$20,815,719</b>
Interfund Transfers	\$18,315,454	\$4,000,000	\$0
<b>TOTAL OPERATING APPROPRIATIONS</b>	<b>\$35,592,759</b>	<b>\$24,216,859</b>	<b>\$20,815,719</b>
<b>Appropriated Fund Balance</b>	<b>\$9,918,185</b>	<b>\$5,922,797</b>	<b>\$4,329,997</b>
<b>TOTAL APPROPRIATIONS</b>	<b>\$45,510,944</b>	<b>\$30,139,656</b>	<b>\$25,145,717</b>

# PUBLIC WORKS

## COUNTY ROAD AND BRIDGE



# PUBLIC WORKS DIVISION - COUNTY ROAD AND BRIDGE FUND

Company: 207  
Accounting Unit: 5043/50

**Mission:** The mission of the Public Works Division of the Infrastructure Services Department is to provide for the safe and efficient movement of people and commerce over County roads and bridges; to assist in improved air and water quality and land development through administering of environmental regulations and subdivision development standards; and to efficiently and effectively manage the resources of the Public Works Division.

**Program Description:** In 2010-11 the County Road and Bridge Fund was created from the consolidation of the Farm to Market and Lateral Road Fund (096) and the Special Road and Bridge Fund (280). The merging of the two funds was the result of declining revenues from vehicles sales tax which caused the Farm to Market and Lateral Road Fund to become unsustainable. The County Road and Bridge Fund continues to provide construction and maintenance of County roadways and bridges. It also continues to combine funding for major road improvement projects to be performed by the County with all operational costs (personnel, operational, supplies, and capital expenditures) related to completing those projects.

Revenue sources for this fund are generated from registration fees and fees on the sale of motor vehicles and are augmented by funds from the State based on road miles maintained. Construction and maintenance of the farm to market road system is coordinated with the Texas Department of Transportation and is currently carried out from three Public Works service centers. All operational expenses for the County’s Public Works service centers including personnel, equipment, and supply costs are included in this fund. Also included are costs for plat reviews, subdivision construction plan reviews, traffic engineering, right of way management and acquisition services, construction inspection and monitoring, capital project design review, capital project management, and limited in-house design.

The County Road and Bridge Fund also provides monies for the construction and maintenance of County roads and bridges. The fund’s main revenue source is the \$10 road and bridge fees charged when motor vehicle licenses are issued and vehicles sales tax. Funds are used for road, bridge and drainage capital improvements, road equipment and machinery, and road and traffic material purchases.

**Performance Indicators:**

FY 2009-10 Actual	FY 2010-11 Estimate	FY 2011-12 Budget
----------------------	------------------------	----------------------

**Workload Indicators:**

Number of Work Orders for Traffic Maintenance	2,573	2,800	2,800
Number of Work Orders for Road Maintenance	8,607	8,723	8,812
Number of Road Center Lane Miles Maintained	1,004	1,004	1,200
Number of Permit Inspections Made	8,412	7,500	5,000
Number of Capital Projects in Design	19	11	6
Number of Capital Projects in Construction	9	9	13

FY 2009-10 Actual	FY 2010-11 Estimate	FY 2011-12 Budget
----------------------	------------------------	----------------------

**Efficiency Indicators:**

Number of Work Orders Processed per Day – Traffic	9.9	10.77	10.77
Number of Work Orders Processed per Day – Road Maintenance	34	34	35
Average Cost per Mile Maintained Roads (Exclude Capital Projects)	\$12,138	\$11,672	\$11,832
Average Number of Miles Seal Coated per Week	2.12	2.21	2.3
Number of Permits Inspected per Inspector	935	833	556

**Effectiveness/Outcome Indicators:**

Percent of Work Orders Completed per Work Day – Road Maintenance	98%	98%	98%
Percent of Work Orders Completed per Work Day – Traffic Maintenance	90%	98%	98%
Percent of Miles of Roads Resurfaced	12%	12%	10%
Number of Projects Substantially Complete	10	3	8

**Program Justification and Analysis: (see schedule of appropriation on following page)**

- Overall, the FY 2011-12 Adopted Budget for the County Road and Bridge Fund decreases 14 percent when compared to FY 2010-11 estimates. The significant reduction is attributable to the removal of the Interfund Transfer normally appropriated into the Multi-year Project Fund 281.
- The FY 2011-12 Adopted Budget allocates \$595,844 for the County Road and Bridge Fund single-year cash-funded projects.
- The Personnel Services group increases 11.9 percent compared to the FY 2010-11 estimates. The FY 2011-12 Adopted Budget provides appropriate funding for authorized positions in the County Road and Bridge Fund. The increase is due to increases in healthcare, retirement and unemployment insurance for the group.
- The FY 2011-12 Travel and Remunerations Group decreases 24.8 percent from FY 2010-11 estimates. The FY 2011-12 Adopted Budget provides funding for mandatory travel and training for staff.
- The Operational Costs group increases 4.3 percent compared to FY 2010-11 estimates. This is due to increases in various line items which include consultant services and road construction services all related to the completion of more road projects.
- The Supplies and Materials budget decreases 2.2 percent from FY 2010-11 estimates. The decrease is due to less funding appropriated for line items such as computer software which was a one-time expenditure.
- The Capital Expenditures group decreases 12.2 percent from FY 2010-11 estimates due to a reduction in machinery and road equipment at the request of the Department.

- The FY 2011-12 Adopted Budget for County Road and Bridge includes a total of two program changes described below:
  - The first program change involves a reorganization of personnel so that the addition of the Flood Control Program in Public Works could be managed more effectively and efficiently. The following positions were deleted:
    - One Capital Projects Manager (E-11) \$103,024
    - One Design Engineer (E-11) \$101,943
    - One Traffic Engineer (E-11) \$103,493 \*effective Feb. 29, 2012
    - One Safety and Training Coordinator (E-7) \$54,064
    - One Streets & Drainage Manager (E-9) \$92,956
    - One Fence Crew Foreman (NE-3) \$27,317
    - One Mechanic II (NE-6) \$34,341
    - One Senior Equipment Operator (NE-6) \$34,235
    - Four Equipment Operator I (NE-2) \$26,264 each \*total \$105,056

The following positions were added:

- One Engineering Services Manager (E-13) \$63,635 \*50% Roads/50% Flood
- One Construction Administration Engineer (E-11) \$101,943
- One Capital Projects Engineer (E-10) \$83,258 \*Effective Feb 29, 2012
- One Safety Program Supervisor (E-5) \$45,931
- One Public Works Operations Manager (E-10) \$100,392

The department is also authorized to award merit pay increases based upon each employee's job performance and current salary level for a total amount not to exceed \$45,000 and an increase no greater than 8 percent of the employee's current salary. The total savings realized by the reorganization plan is \$216,273.

- The second program change is the transfer of one Asset Manager (E-10) from the General Fund for a total cost of \$50,026. This represents only 50 percent of the position salary and benefits. The remaining 50 percent will be funded from the Flood Control Program.

## **Appropriations:**

	FY 2009-10 Actual	FY 2010-11 Estimate	FY 2011-12 Budget
<b><u>Appropriations</u></b>			
Personnel Services	\$9,324,138	\$9,390,025	\$10,510,473
Travel and Remunerations	40,293	40,200	30,200
Operational Costs	1,419,102	2,399,164	2,501,264
Supplies and Materials	5,042,160	5,533,304	5,407,938
Capital Expenditures	1,241,085	2,017,904	1,770,000
Interfund Transfers	18,315,454	4,000,000	0
<b>TOTAL APPROPRIATIONS</b>	<b>\$35,382,232</b>	<b>\$23,380,597</b>	<b>\$20,219,875</b>

FY 2009-10 Actual	FY 2010-11 Estimate	FY 2011-12 Budget
----------------------	------------------------	----------------------

**Single Year – Cash Funded Projects**

5219	Loop 1604 ROW	\$9,627	\$10,000	\$0
5275	New World II	0	35,000	35,000
5279	Crestway I (MPO)	0	25,000	25,000
5281	Mission Trails (MPO)	0	71,512	71,512
5303	Crestway II (MPO)	0	45,000	45,000
5305	Miller Road	0	70,000	70,000
5322	Warning Lights and Traffic Signals	83,095	19,935	0
5356	Traffic Calming Devices, Pct 1	0	25,000	25,000
5357	Traffic Calming Devices, Pct 2	0	25,000	25,000
5358	Traffic Calming Devices, Pct 3	21,805	80,815	832
5359	Traffic Calming Devices, Pct 4	0	25,000	25,000
5360	Bridge Assessment	96,000	276,000	273,500
New	Wilderness Oak Golf Canyon Traffic Signal	0	128,000	0
<b>TOTAL PROJECTS</b>		<b>\$210,527</b>	<b>\$836,262</b>	<b>\$595,844</b>
<b>TOTAL COUNTY ROAD AND BRIDGE FUND</b>		<b>\$35,592,759</b>	<b>\$24,216,859</b>	<b>\$20,815,719</b>

**Authorized Positions:**

FY 2009-10 Actual	FY 2010-11 Estimate	FY 2011-12 Budget
----------------------	------------------------	----------------------

**Administration**

Administrative Assistant	1	1	1
Administrative Clerk I	1	1	1
Asset Manager	0	0	.5
Attorney III	1	1	1
Capital Projects Engineer	0	0	1
Capital Projects Manager	1	1	0
Civil Engineers	2	2	2
Civil Engineering Assistant	6	6	6
Construction Administration Engineer	0	0	1
Construction Inspector I	5	5	5
Construction Inspector II	4	4	4
County Engineer	1	1	1
Design Engineer	1	1	0
Development Services Engineer	1	1	1
Engineering Services Manager	0	0	.5
Engineering Technician II	2	2	2
Fiscal and Administrative Services Manager	1	1	1

	FY 2009-10 Actual	FY 2010-11 Estimate	FY 2011-12 Budget
GIS Analyst*	1	1	1
Human Resources Technician	1	1	1
Office Assistant II	1	1	1
Office Assistant IV	3	3	3
Office/Contracts Supervisor	1	1	1
Paving Crew Foreman	1	1	1
Public Works Operations Manager	0	0	1
Right of Way Specialist	1	1	1
Safety and Training Coordinator	1	1	0
Safety Program Supervisor	0	0	1
Senior Construction Inspector	1	1	1
Streets and Drainage Manager	1	1	0
Subdivision Technician	1	1	1
Survey Crew Chief	1	1	1
Survey Crew Worker	1	1	1
Survey Instrument Operator	1	1	1
Technical Support Specialist III	1	1	1
Traffic Engineer	1	1	0
Traffic Safety Coordinator	1	1	1
<b><i>Total – Administration</i></b>	<b>46</b>	<b>46</b>	<b>46</b>
<b>Southeast Service Center</b>			
Administrative Clerk II	1	1	1
Concrete Crew Foreman	1	1	1
Equipment Operator I	32	32	30
Equipment Operator II	8	8	8
Equipment Operator II w/Pesticide Licenses	2	2	2
Fence Crew Foreman	1	1	0
Field Maintenance Worker	19	19	19
Paving Crew Foreman	0	0	0
Public Works Assistant Superintendent	3	3	3
Public Works Superintendent	1	1	1
Senior Equipment Operator	11	11	10
Tire Service Worker	1	1	1
Welder I	1	1	1
<b><i>Total – Southeast Service Center</i></b>	<b>81</b>	<b>81</b>	<b>77</b>
<b>Northeast Service Center</b>			
Administrative Clerk II	1	1	1
Equipment Operator I	20	20	19

	FY 2009-10 Actual	FY 2010-11 Estimate	FY 2011-12 Budget
Equipment Operator II	6	6	6
Equipment Operator II w/Pesticide Licenses	2	2	2
Field Maintenance Worker	11	11	11
Pavement Marking Operator I	1	1	1
Pavement Marking Operator II	2	2	2
Public Works Assistant Superintendent	2	2	2
Public Works Superintendent	1	1	1
Senior Equipment Operator	3	3	3
Traffic Control Fabricator I	1	1	1
Traffic Control Fabricator II	1	1	1
Traffic Counter I	1	1	1
Traffic Counter II	1	1	1
Traffic Maintenance Supervisor	1	1	1
Traffic Sign Technician I	3	3	3
Traffic Sign Technician II	3	3	3
<b><i>Total – Northeast Service Center</i></b>	<b>60</b>	<b>60</b>	<b>59</b>
<b>Northwest Service Center</b>			
Administrative Clerk II	1	1	1
Equipment Operator I	19	19	18
Equipment Operator II	6	6	6
Equipment Operator II w/Pesticide Licenses	2	2	2
Field Maintenance Worker	13	13	13
Public Works Assistant Superintendent	1	1	1
Public Works Superintendent	1	1	1
Senior Equipment Operator	3	3	3
<b><i>Total – Northwest Service Center</i></b>	<b>46</b>	<b>46</b>	<b>45</b>
<b>Public Works - Fleet Maintenance</b>			
Automotive Part Clerk	1	1	1
Equipment Maintenance Coordinator	1	1	1
Mechanic I	7	7	7
Mechanic II	4	4	3
<b><i>Total – Public Works Fleet Maintenance</i></b>	<b>13</b>	<b>13</b>	<b>12</b>
<b><i>TOTAL –COUNTY ROAD &amp; BRIDGE FUND</i></b>	<b>246</b>	<b>246</b>	<b>239</b>

\*An organizational review of the GIS function countywide is scheduled for FY 2011-12 as part of identifying additional efficiencies and cost saving measures. The review is expected to be completed by January 31, 2011.

# PUBLIC WORKS - COUNTY ROAD AND BRIDGE FUND MULTI-YEAR PROJECTS

Company: 700

Within Fund 281 of the FY 2011-12 Adopted Budget, projects are separated from the operations component of the County Road and Bridge Fund. These projects include those that were debt funded since FY 2005-06, as well as some projects that are cash funded that are in the preliminary phases and construction phases.

The strategy for the FY 2011-12 Adopted Budget does not require new funding sources for road projects. Instead funding from five existing road projects totaling \$11,200,000 will be reprogrammed for two existing and two new road projects in FY 2011-12. These five projects have been identified as a part of the Flood Control Program: Galm Road Phase I (\$2,000,000), Babcock Phase V (\$6,715,000), Trainer Hale Drainage (\$540,000), Wilderness Oak Bridge (\$1,420,600), and Benton City Road (\$524,400). Road and Bridge funding from these projects will be reprogrammed to the following projects: Big Country V (\$4,200,000), Bulverde V (\$2,500,000), and two new projects Galm Road Phase II (\$2,500,000) and Walzem Road (\$2,000,000).

The FY 2011-12 Adopted Budget closes out the following projects and transfers the remaining available funds into contingencies: Drainage Structures 04 (\$5,110), Ventura Phase VII (\$0), Raven Field (\$280,347), Bulverde Road Phase II (\$0), General Engineering Services F&N (\$0), Comal Street (\$66,323), Talley Road-Potranco to Culebra (\$600,000), Foster Road Lakeview Traffic (\$156,772), Traffic Signal Pct. 1 (\$243,009), New World/Miller Road Traffic Signal (\$71,178), Wilderness Oak Bridge (\$19,791), and Benton City Road (\$0).

**Bexar County, Texas**  
**County Road and Bridge Fund (Multi-Year Projects)**  
**Fiscal Year Ending September 30, 2012**

	Total Project Budget	Expenditures To Date	FY 2011-12 Available
<b>AVAILABLE FUNDS</b>			
<b>Beginning Balance</b>			
Proceeds from Previous Debt Issuance	\$33,233,341	\$12,440,629	\$20,792,712
Interfund Transfers	20,730,217	4,456,133	16,274,084
Private Funding Donations	5,690,861	5,690,861	0
Intergovernmental Revenue	534,504	534,504	0
<b>TOTAL AVAILABLE FUNDS</b>	<b>\$60,188,923</b>	<b>\$23,122,127</b>	<b>\$37,066,796</b>

<b>Project Org</b>	<b>Project Name</b>	<b>Total Project Budget</b>	<b>Expenditures to Date</b>	<b>FY 2011-12 Available</b>
5230	State Highway 211 ROW	\$1,504,525	\$1,381,502	\$123,023
5338	Boerne Stage Road Phase I	745,000	721,694	23,306
5342	Galm Road Phase I	6,405,000	2,326,860	4,078,140
5343	Borgfeld Road Phase II	3,899,856	1,005,400	2,894,456
5346	Bulverde/Evans Intersection	1,000,000	754,874	245,126
5353	Foster Road Phase II	7,151,775	4,656,904	2,494,871
5354	Babcock Phase V	2,563,331	1,086,117	1,477,214
5355	Ventura VIII	3,125,000	2,149,700	975,300
5363	Ventura IX and X	4,974,000	3,287,012	1,686,988
5364	Heritage Park SD Phase II	2,525,000	1,965,990	559,010
5370	Heritage Park Phase III	3,005,041	1,461,273	1,543,768
5371	Big Country V	5,262,073	542,900	4,719,173
5372	West Military Road Extension	2,400,000	430,400	1,969,600
5373	Bulverde Phase IV	845,595	391,888	453,707
5374	Camelot Phase II	3,395,000	393,191	3,001,809
5375	Trainer Hale Drainage	320,000	106,700	213,300
5377	Bulverde V	3,250,000	459,722	2,790,278
5378	Macdona Subdivision Phase I	468,113	0	468,113
5381	Rainbow Ridge	1,377,531	0	1,377,531
New	Galm Road Phase II	2,500,000	0	2,500,000
New	Walzem Road	2,000,000	0	2,000,000
	<b>Total Capital Projects</b>	<b>\$58,716,840</b>	<b>\$23,122,127</b>	<b>\$35,594,713</b>
	<b>Contingencies</b>	<b>\$1,472,083</b>	<b>\$0</b>	<b>\$1,472,083</b>
	<b>Total Appropriations</b>	<b>\$60,188,923</b>	<b>\$23,122,127</b>	<b>\$37,066,796</b>

**Bexar County, Texas**  
**TXDOT & ATD Multi-Year Company 701**  
**Fiscal Year Ending September 30, 2012**

<b>FY 2009-10</b>	<b>FY 2010-11</b>	<b>FY 2011-12</b>
<b>Actual</b>	<b>Estimate</b>	<b>Budget</b>

<b>AVAILABLE FUNDS</b>
------------------------

**Beginning Balance, October 1, 2011**

Undesignated Funds	\$41,858,683	\$32,240,424	\$31,992,112
<b>Total Beginning Balance</b>	<b>\$41,858,683</b>	<b>\$32,240,424</b>	<b>\$31,992,112</b>

**Revenue**

ATD Sales Tax Revenue	\$10,850,427	\$11,148,322	\$9,750,000
Intergovernmental Revenue	698,778	11,132	0
Revenue From Use of Assets	108,199	42,517	36,000
<b>Total Revenues</b>	<b>\$11,657,404</b>	<b>\$11,201,971</b>	<b>\$9,786,000</b>

<b>TOTAL AVAILABLE FUNDS</b>	<b>\$53,516,087</b>	<b>\$43,442,395</b>	<b>\$41,778,112</b>
------------------------------	---------------------	---------------------	---------------------

<b>APPROPRIATIONS</b>
-----------------------

Highways	\$15,340,769	\$5,510,060	\$3,753,887
<b>Subtotal</b>	<b>\$15,340,769</b>	<b>\$5,510,060</b>	<b>\$3,753,887</b>
Interfund Transfers	\$5,934,894	\$5,940,223	\$5,943,090

<b>TOTAL OPERATING APPROPRIATIONS</b>	<b>\$21,275,663</b>	<b>\$11,450,283</b>	<b>\$9,696,977</b>
---------------------------------------	---------------------	---------------------	--------------------

<b>Appropriated Fund Balance</b>	<b>\$32,240,424</b>	<b>\$31,992,112</b>	<b>\$32,081,135</b>
----------------------------------	---------------------	---------------------	---------------------

<b>TOTAL APPROPRIATIONS</b>	<b>\$53,516,087</b>	<b>\$43,442,395</b>	<b>\$41,778,112</b>
-----------------------------	---------------------	---------------------	---------------------

# TEXAS DEPT OF TRANSPORTATION AND ADVANCED TRANSPORTATION DISTRICT MULTI-YEAR FUND

Company: 701

On December 19, 2006, Commissioners Court approved a Pass Through Financing Program Agreement between Bexar County and the Texas Department of Transportation for the construction of improvements to the roadways of FM 3487 from IH 410 to FM 471 (Culebra Road) and FM 2696 from Glade Crossing to West Oak Estates (Blanco Road), and Loop 1604 from Braun Road to Highway 151 (1604 Superstreet).

**Culebra Road – FM3487:** The improvements to Culebra Road includes upgrades to the existing roadway, a sixth lane, intermittent raised medians at major signalized intersections, several upgrades at several cross drainage features including relocating a segment of the city street outside of a flood prone area.

**Blanco Road - FM 2696:** The improvements to Blanco Road include upgrading the existing roadway to four lanes, raised median to separate vehicular travel, several channelized median openings to allow left turn lanes, and several cross drainage features.

**Superstreet 1604:** The Superstreet 1604 project provides funding for administration/project oversight, environmental clearance, engineering design, and outreach activities to be performed by the Alamo Regional Mobility Authority.

	<b>Total Project Budget</b>	<b>Expenditures To Date</b>	<b>FY 2011-12 Available</b>
<b>APPROPRIATIONS</b>			
5348 - Culebra Road - FM 3487	\$23,231,000	\$22,858,151	\$372,849
5351 - Blanco Road - FM 2696	30,965,000	27,583,962	3,381,038
5376 - Superstreet 1604	900,000	900,000	0
<b>TOTAL APPROPRIATIONS</b>	<b>\$55,096,000</b>	<b>\$51,342,113</b>	<b>\$3,753,887</b>