



LAUNDRY EQUIPMENT SCHEDULE

MARK ○	DESCRIPTION	CONNECTION SIZE					
		SW	CW	(140') HW	GREASE WASTE	GREASE VENT	GAS CFH
201	TWO COMPARTMENT SINK	-	(2) 3/4"	(2) 3/4"	-	-	-
202	LAUNDRY WASHER	-	(2) 3/4"	(2) 3/4"	-	-	-
203	LAUNDRY WASHER	-	(2) 3/4"	(2) 3/4"	-	-	-
204	LAUNDRY WASHER	-	(2) 3/4"	(2) 3/4"	-	-	-
205	LAUNDRY WASHER	-	(2) 3/4"	(2) 3/4"	-	-	-
206	LAUNDRY WASHER	-	(2) 3/4"	(2) 3/4"	-	-	-
207	LAUNDRY WASHER	-	(2) 3/4"	(2) 3/4"	-	-	-
209	LAUNDRY DRYER	-	-	-	-	-	395
211	LAUNDRY DRYER	-	-	-	-	-	395
212	LAUNDRY DRYER	-	-	-	-	-	395
213	LAUNDRY DRYER	-	-	-	-	-	395
214	LAUNDRY DRYER	-	-	-	-	-	395
215	LAUNDRY DRYER	-	-	-	-	-	395
216	LINT COLLECTOR		(2) 1/2"				
217	AIR COMPRESSOR						

KITCHEN EQUIPMENT SCHEDULE

MARK ○	DESCRIPTION	CONNECTION SIZE			
		CW	(140°) HW	GREASE WASTE	GREAS VENT
115	WORKTABLE WITH SINK	3/4"	3/4"	-	-
116	FRYER	-	-	-	-
117	GRIDDLE	-	-	-	-
118	RANGE	-	-	-	-
119	CONVECTION OVEN	-	-	-	-
124	BAKER'S TABLE	1/2"	1/2"	I.D.	-
135	80 GALLON KETTLE	1/2"	1/2"	I.D.	-
136	WORKTABLE WITH SINK	3/4"	3/4"	I.D.	-
137	80 GALLON KETTLE	1/2"	1/2"	I.D.	-
138	80 GALLON KETTLE	1/2"	1/2"	I.D.	-
139	TILT BRAISING PAN	1/2"	1/2"	-	-
142	TILT BRAISING PAN	-	-	-	-
144	GRIDDLE	-	-	-	-
145	CONVECTION OVEN	-	-	-	-
147	WORKTABLE WITH SINK	3/4"	3/4"	I.D.	-
155	TRAY MAKE-UP CONVEYOR	3/4"	3/4"	-	-
160	THREE COMPARTMENT SINK	(2) 3/4"	(2) 3/4"	-	-
163	ICE MAKER	1/2"	-	-	-
166	POT COLLECTOR	1/2"	1/2"	2"	2"
168	DISH MACHINE	-	3/4"	-	-
169	BOOSTER HEATER	-	3/4"	-	-
175	COFFEE BREWER	1/2"	-	-	-
176	TEA BREWER	1/2"	-	-	-
183	WORKTABLE WITH SINK	3/4"	3/4"	-	-

I.D. - INDIRECT WASTE.

PLUMBING FIXTURE CONNECTION SCHEDULE

MARK	DESCRIPTION	CONNECTION SIZE (IN.)				REMARKS
		CW	HW	WASTE	VENT	
WC-1	WATERCLOSET	1 1/2"	-	4"	2"	STAINLESS STEEL DETENSION GRADE
WC-2	WATERCLOSET	1 1/2"	-	4"	2"	
LAV-1	LAVATORY	1/2"	1/2"	2"	2"	FLOOR MOUNTED VITROUS CHINA (STAFF)
LAV-2	LAVATORY	1/2"	1/2"	2"	2"	WALL HUNG STAINLESS STEEL DETENSION GRADE
LAV-3	LAVATORY	1/2"	1/2"	2"	2"	HAND SINK KITCHEN AREA, STAINLESS STEEL DETENSION GRADE
MS-1	MOP SINK	3/4"	3/4"	3"	2"	COUNTER MOUNTED - VITROUS CHINA (STAFF)
FD-1	FLOOR DRAIN	-	-	3"	2"	FLOOR MOUNTED
FD-2	FLOOR DRAIN	-	-	4"	2"	KITCHEN & FINISH AREAS
FS-1	FLOOR SINK	-	-	4"	2"	UNFINISHED AREAS
FS-2	FLOOR SINK	-	-	4"	2"	FULL GRATE
FS-3	FLOOR SINK	-	-	4"	2"	3/4 GRATE
HB-1	HOSE BIBB	1/2"	-	-	-	TROUGH DRAIN
WH-1	WALL HYDRANT	3/4"	-	-	-	LOADING DOCK AREA
						DUMPSTER AREA

HOT WATER RECIRCULATING PUMP SCHEDULE

MARK	DESCRIPTION	HP	HD. FT.	GPM	RPM	VOLTS/PH	REMARKS
HWRP-1	HOT WATER RETURN	3/4	45	15	1750	480/3/60	B & G NO. 60-16

GAS WATER HEATER SCHEDULE

MARK	RECOVER GPH AT 40°F RISE ①	FLUE SIZE ④	NATURAL GAS CFH	STORAGE CAPACITY (GALLONS) ⑤	REMARKS
GWH-1	2455	16	1010	541	TELEDYNE NO. 1010 ②
GWH-2	2455	16	1010		TELEDYNE NO. 1010 ②
GWH-3	608	8	250	250	TELEDYNE NO. 250 ③
GWH-4	608	8	250		TELEDYNE NO. 250 ③

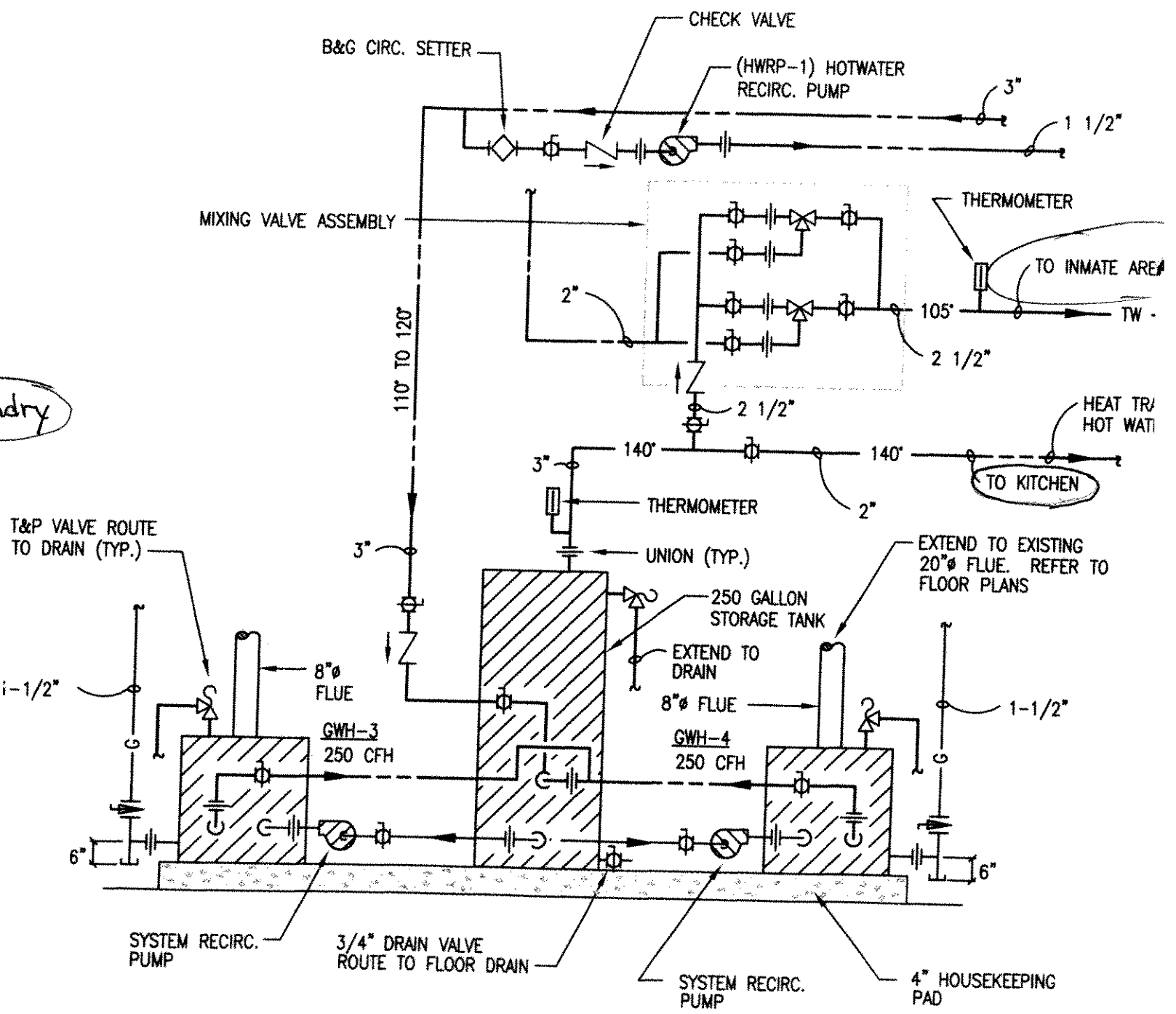
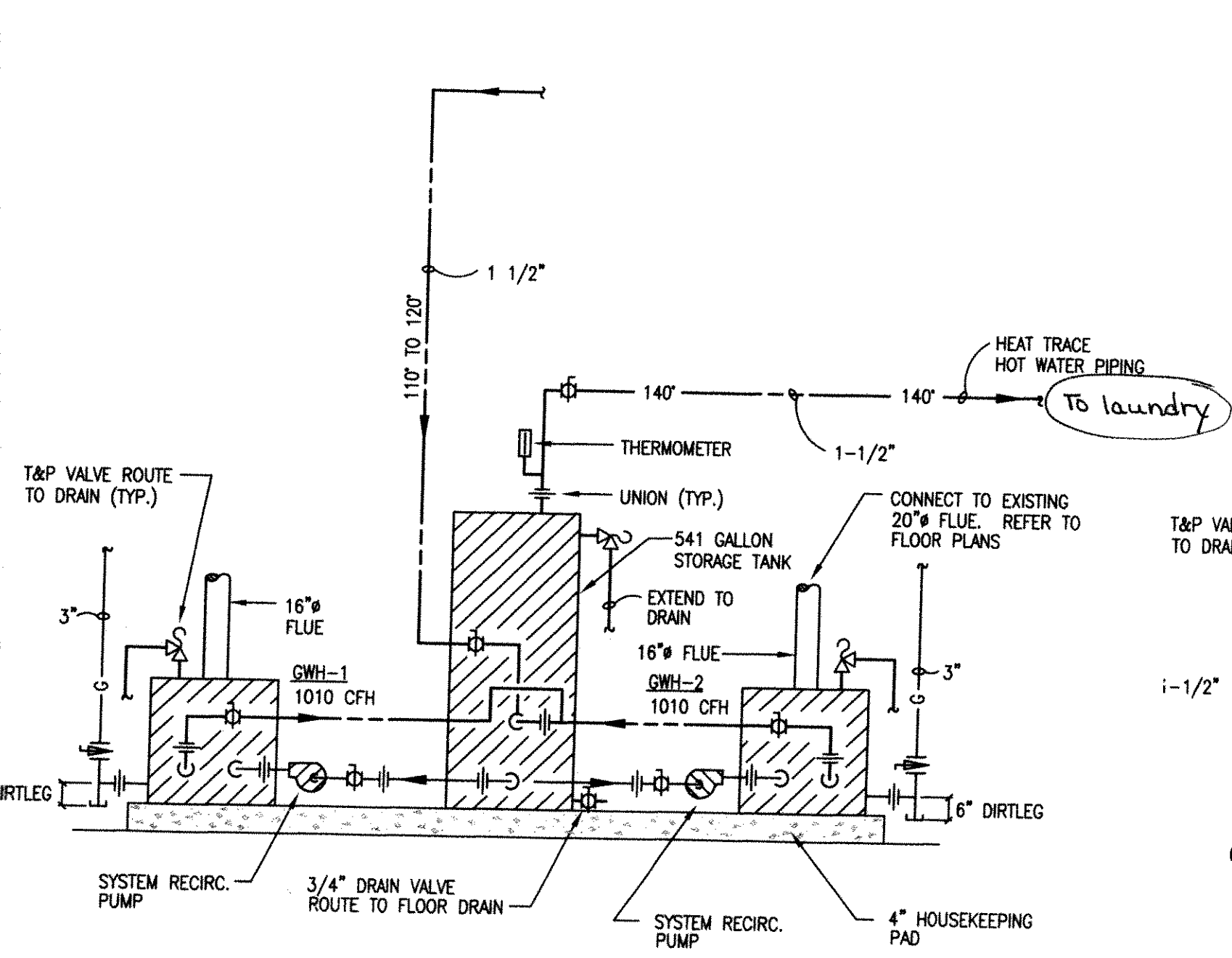
NOTES:

- ① INCOMING WATER TO STORAGE TANK FROM SOLAR WATER HEATING SYSTEM.
- ② HOT WATER PUMP ON HEATER 1/3HP EACH. 120/1Ø
- ③ HOT WATER PUMP ON HEATER 1/12HP EACH. 120/1Ø
- ④ CONNECT TO EXISTING FLUE THROUGH ROOF.
- ⑤ FACTORY INSULATE STORAGE TANK W/JACKETING.

LOW TABLE

LOW TABLE

9 SUMP PUMP @ LOADING DOCK
P401 SCALE: NOT TO SCALE



12 GAS WATER HEATER DETAIL
P401 SCALE: NOT TO SCALE

13 GAS WATER HEATER DETAIL
P401 SCALE: NOT TO SCALE