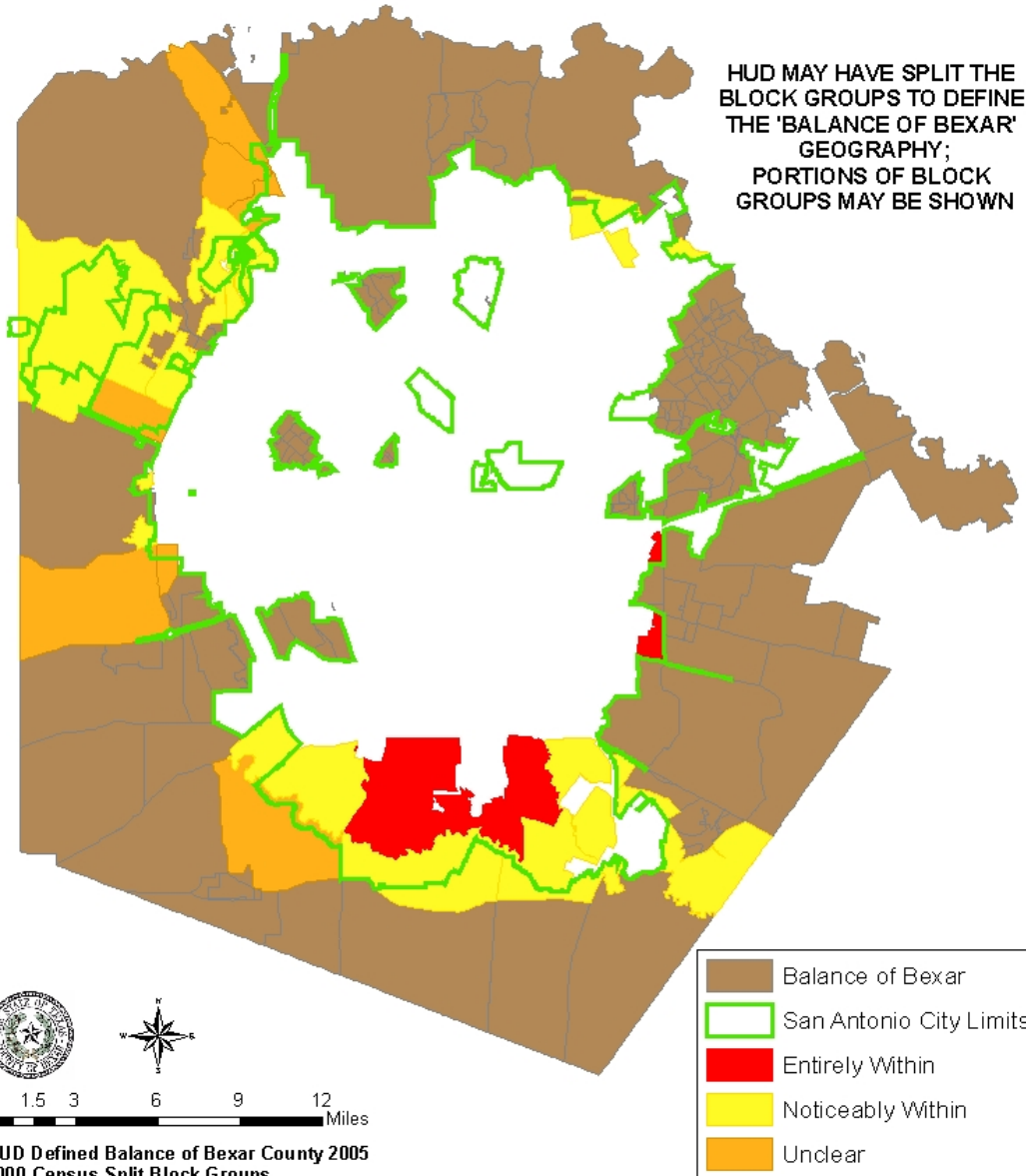


Impact of San Antonio Annexation on HUD Defined Balance of Bexar County (Unincorporated Areas To Be Incorporated)



Map 15: Impact of San Antonio Annexation on HUD Defined Balance of Bexar County

- Annexation data was ranked by order of affected areas and populations into three categories
- 1). Entirely within the annexed areas; 2). Noticeably within the annexed area and 3). Unclear if within
- The impact of annexation may require the increased use of surveys to qualify projects and will support an emphasis on projects that primarily benefit “limited clientele” populations.